

Jacobsen Declaration Exhibit AS



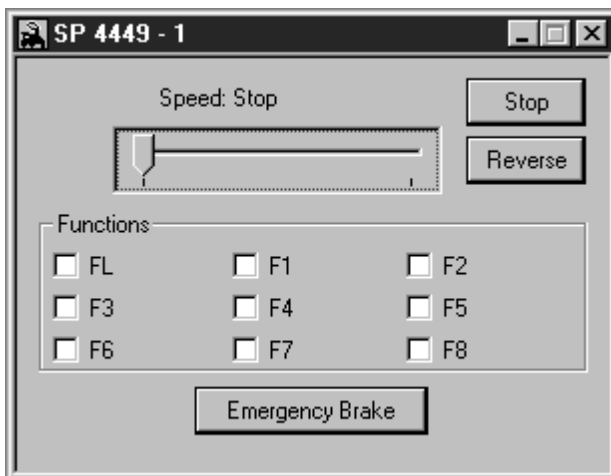
Simple Computer Control for DCC Model Railroads Using Engine Commander™ Program

Engine Commander™ release 2 is an easy to use Microsoft® Windows™ 95/98 or NT based model railroad layout controller designed for DCC.

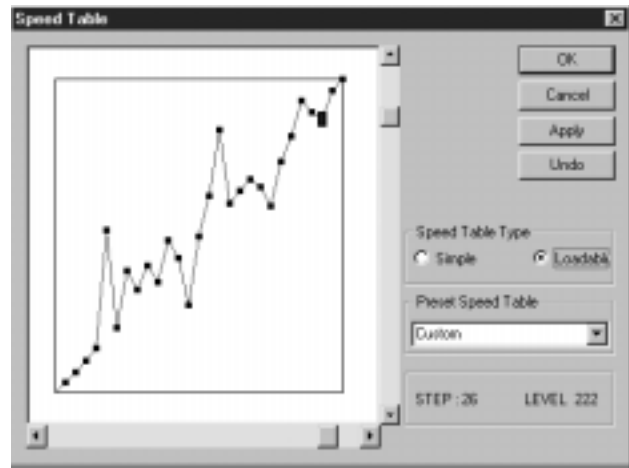
With the program you can manually control or program locomotives and switches and set all of the CV states of the decoder. The program also includes Visual Basic support to allow the user to develop programs to run with any command station. You are now free to select a DCC



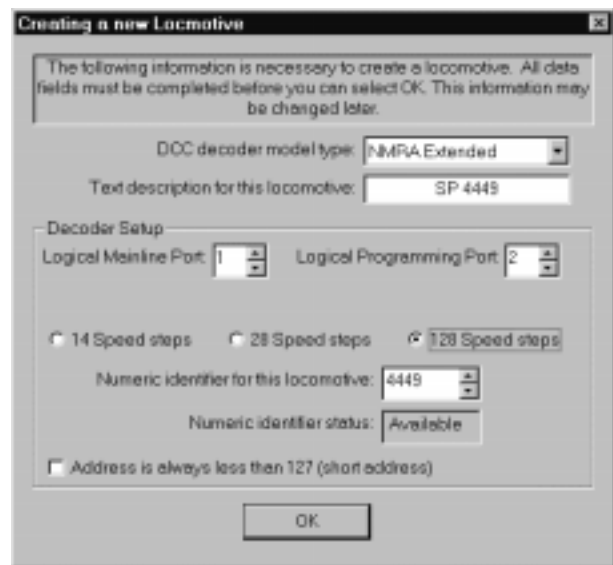
command station without worrying about your software investment. Engine Commander™ supports all DCC vendors with a vendor independent programmatic interface. The program allows you to focus on your hobby, and enjoy the fruits of computer-assisted layout control.



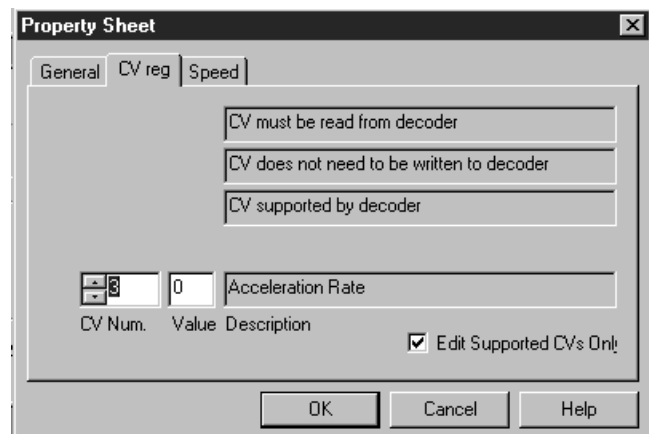
KAM's Engine Commander™ application also supports engine profiling. The user can use the simple graphic menus to profile the engine for the desired operational characteristics and program them into the locomotive.



There are many different types of command station interfaces supported by the program. Controller selection uses a simple drop down menu supporting multiple interfaces.

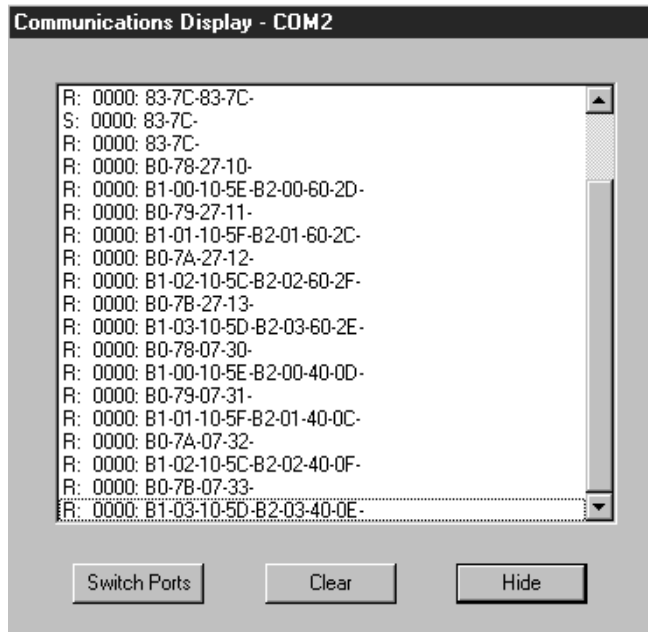


The NMRA DCC standard defines two types of controllers, from basic (Marklin™ compatible) engine controllers to extended controllers. The application supports all of these configurations and supports loadable speed tables for all decoders and decoder CV (Control Variable) registers.



Users can set up their own DCC devices or download the latest DCC decoder tables from

KAM's on-line support web page at <http://www.kamind.com>. The power is in your hands to control and monitor your layout!



Engine Commander™ program also supports a sophisticated computer monitoring interface that allows you to see the control commands that are being sent to the model railroad command station. This way you will be able to see the commands during an actual operation or a simulation session.

Visual Basic 5 using Train Tools™ API

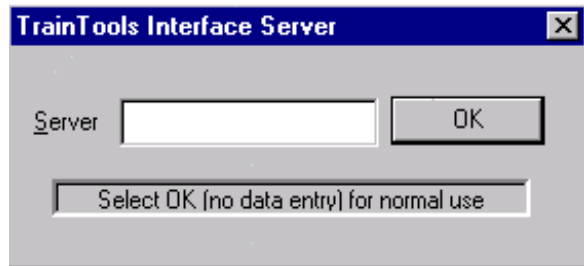
```

|*****
| Send Command
| Note:
| Load the state of the decoder first, then send the command
|*****
Private Sub Command_Click()
'Send the command from the interface to the command station, use the engineObject
Dim iError, iSpeed As Integer
If Not Connect.Enabled Then
' TrainTools interface is a caching interface. This means that you need to set
' the CV's or other operations first; then execute the command.
iSpeed = Speed.Text
iError = EngCmd.DccEngSetFunction(iEngineObject, 0, F0.Value)
iError = EngCmd.DccEngSetFunction(iEngineObject, 1, F1.Value)
iError = EngCmd.DccEngSetFunction(iEngineObject, 2, F2.Value)
iError = EngCmd.DccEngSetFunction(iEngineObject, 3, F3.Value)
iError = EngCmd.DccEngSetSpeed(iEngineObject, iSpeed, Direction.Value)
If iError = 0 Then iError = EngCmd.DccCmdCommand(iEngineObject)
SetError (iError)
End If
End Sub

```

Engine Commander™ includes Train Tools™ Command station interface. The program allows the user to run Engine Commander™ or a Visual Basic application at the same time. This dual interface support can be supported locally on you system or on a remote Train Tools™ server.

Engine Commander™ integrates the new Distributed COM Technology that allows you to do distributed model railroad control. One of the benefits of this is the ability to run multiple command stations at the same time.



KAM has gone to great lengths to provide the user with a complete set of programming interfaces so you can use either Engine Commander™ or choose your own Visual Basic application.

At KAM, we are modellers ourselves and believe that computers should be used to enhance the operation of the model railroad layout.

Ordering Information

Engine Commander™ release 2 single user copy includes single user license, manual.	\$139
Shipping and Handling add	\$14
International Air Mail add	\$24

Total enclosed: _____



Signature: _____

Expiration: _____

Name: _____

Billing Address: _____

email: _____

Phone #: (_____) _____ FAX #: (_____) _____

100% Money back refund on all orders within 30 days of shipment
 Please mail your check or money order to:

KAM Industries, Dept. K
2373 NW 185th Ave., Suite #416
Hillsboro OR 97124
FAX: #: (503) 291-1221
WEB: <http://www.kamind.com>
email: sales@kam.rain.com

© 1992 - 1998 KAM Industries. All rights reserved.
 Printed in the United States of America
 Computer Dispatcher™, Engine Commander™, The Conductor™, Train Server™ and Train Tools™ are trademarks of KAM Industries.
 Microsoft is a registered trademark and Windows is a trademark of Microsoft Corporation.
 Marklin is a trademark of Marklin GmbH.
 July 1998